



One Shot Long Length

Created by Canon's Imaging Technology

Enhanced Efficiency*

Dose Reduction*

Cost Effective

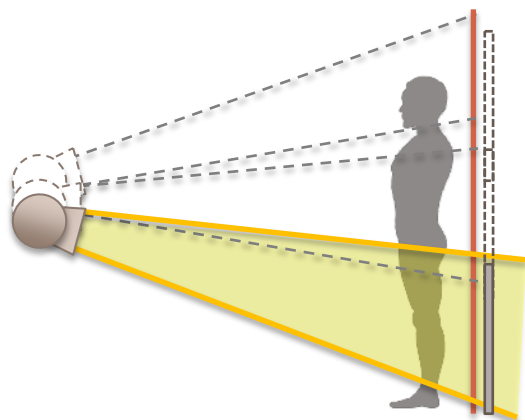
Canon

*Compared to a multi-shot implementation

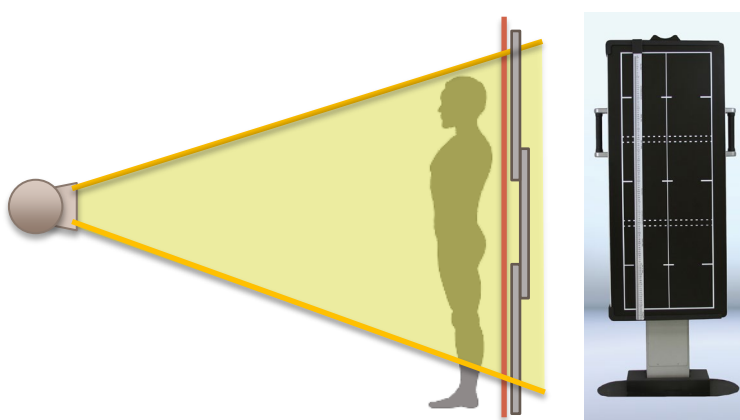
Canon's One Shot Long Length Imaging

The One Shot Long Length option creates long length images acquired in just a single exposure using two or three standard detectors temporarily mounted in a special stand*. This feature enhances efficiency and reduces radiation exposure compared to stitched multiple exposures.

Multiple Exposure



One Shot Exposure



*The stand is required separately.

The individual detectors can be used for other exams when removed from the stand. They are not dedicated to the Long Length imaging operation, which provides increased flexibility and efficiency of use.

If your system already includes compatible Canon detectors, then all that is needed is to add the One Shot Long Length option software to the CXDI Control station and a supported stand.

Canon's One Shot Long Length Advantage

- Improved workflow: shorter examination time
- Reduced dose using single exposure
- Lower risk of artifacts due to patient movement
- Increased image quality
- Less distortion from multiple projection angles
- Less stitching artifacts
- Cost effective Long-Length imaging installation

Compatible Detectors : CXDI-410CW, and 710CW



<https://mcu.canon>

Canon and CXDI are registered trademarks of Canon Inc. in the United States and may also be registered trademarks or trademarks in other countries. All other third-party brand names and product names are registered trademarks or trademarks of their respective owners. Specifications and availability are subject to change without notice. Not responsible for typographical errors. Copyright © 2022 Canon Medical Components U.S.A., Inc. All rights reserved.

DRB-046 Rev.A.1.

Canon

Canon Medical Components U.S.A., Inc.
Irvine, California, 92614
Telephone (U.S.A. only) : (800)970-7227
Email: drsales@mcu.canon